

Spelling rules help children who don't have a strong impression of how words should look.

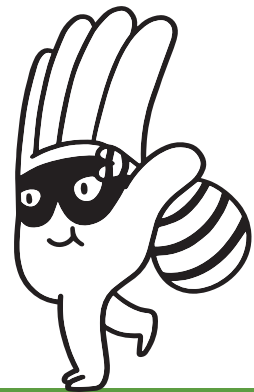
Similar rules should be grouped together, explained, illustrated, and revised, this way when a child can't tell whether the word looks correct or not, they can work it out from the rule. It's best to explain that unfortunately there are always some exceptions in English.

The Spelling Thieves

1. The letter **s** often steals the sound of the letter **z** when it is between two vowels.

Have a look at these words and see how many you can include in a labelled picture:

use, rose, nose, cousin, wise, vision, lose, visit, busy, lazy, Susan, visit, misery



Rules – Sheet 2



2. The letter **o** often steals the short /u/ sound (as in umbrella) before the letters **n**, **m**, **th** and **v**.

Have a look at these words and see how many you can include in a labelled picture (or two):

monkey, **money**, **Monday**, **son**, **honey**, **tongue**, **mother**, **brother**, **some**, **company**, **compass**, **glove**, **love**, **dove**, **above**, **oven**



Rules – Sheet 3

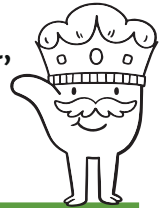
9

3. The letter **g** often steals the sound /j/ when the next letter is **e, i, or y**.

Have a look at these words and see how many you can include in a labelled picture.

This is sometimes called soft **g**.

gym, energy, gypsy, giant, ginger, giraffe, engine, magic, gem, gentle, angel, gerbil, orange



Rules – Sheet 4

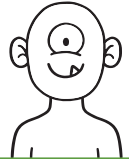
C

4. The letter **c** often steals the sound /s/ when followed by **e**, **i**, or **y**.

Have a look at these words and see how many you can include in a labelled picture.

This is sometimes called soft **c**.

circle, **circus**, **pencil**, **cinema**, **exercise**, **medicine**, **princess**, **concert**,
police, **sauce**, **December**, **excellent**, **cycle**, **cyclone**, **cyclops**



Rules – Sheet 5

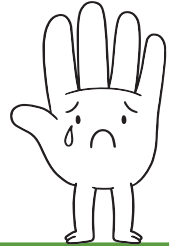
y

5. The letter **y** steals several sounds.

Most importantly **y** steals the long **i** sound (as in **ice cream**) at the end of one syllable words.

Have a look at these words and see how many you can include in a labelled picture.

try, cry, dry, spy, sly, fry, fly, my, by, shy, why



Rules – Sheet 6

y

6. **y** also steals the long **e** sound (as in **eagle**) at the end of two (or more) syllable words.

Have a look at these words and see how many you can include in a labelled picture.

party, **baby**, **city**, **puppy**, **cherry**, **berry**, **lorry**, **teddy**, **mummy**,
daddy, **crazy**, **pony**, **lady**, **angry**

