

What's What? Games Sheet 1

The words below are either **nouns**, **verbs**, **adjectives** or **adverbs**, cut them out and pop them in a hat/box/bag. When it's your turn, lay out the helpful **WORD FAMILY** (Parts of Speech) cards and see how many of these you can put in the correct pile in one minute. Checklist is at the bottom – no peeking!

dog	beautiful	quietly
lions	naughty	loudly
fish	cheeky	happily
swan	colourful	cheekily
doves	funny	meanly



What's What? Games Sheet 2

The words below are either **nouns**, **verbs**, **adjectives** or **adverbs**, cut them out and pop them in a hat/box/bag. When it's your turn, lay out the helpful **WORD FAMILY** (Parts of Speech) cards and see how many of these you can put in the correct pile in one minute. Checklist is at the bottom – no peeking!

sofa	quick	busy
spaceship	fantastic	easily
scooter	red	shyly
triangle	green	kindly
jelly	blue	unkindly

What's What? Games Sheet 3

The words below are either **nouns**, **verbs**, **adjectives** or **adverbs**, cut them out and pop them in a hat/box/bag. When it's your turn, lay out the helpful **WORD FAMILY** (Parts of Speech) cards and see how many of these you can put in the correct pile in one minute. Checklist is at the bottom – no peeking!

plate	pink	madly
spoons	golden	suddenly
tomato	striped	joyfully
shirt	spotted	skilfully
dress	curly	wickedly



What's What? Games Sheet 4

The words below are either **nouns**, **verbs**, **adjectives** or **adverbs**, cut them out and pop them in a hat/box/bag. When it's your turn, lay out the helpful **WORD FAMILY** (Parts of Speech) cards and see how many of these you can put in the correct pile in one minute. Checklist is at the bottom – no peeking!

dinosaurs	brave	calmly
camera	huge	crossly
phone	expensive	sadly
market	horrid	slowly
knight	strong	quickly

What's What? Games Sheet 5

The words below are either **nouns**, **verbs**, **adjectives** or **adverbs**, cut them out and pop them in a hat/box/bag. When it's your turn, lay out the helpful **WORD FAMILY** (Parts of Speech) cards and see how many of these you can put in the correct pile in one minute. Checklist is at the bottom – no peeking!

to run	to hope	to think
to bring	to smile	to shake
to cook	to drive	to play
to sleep	to wash	to read
to back	to buy	to make



What's What? Games Sheet 6

Here are some spares for your own words.



What's What? Games Sheet 7

The answers!

Nouns	Adjectives	Verbs	Adverbs
dog	beautiful	to run	quietly
lions	naughty	to cook	loudly
fish	cheeky	to sleep	happily
swan	colourful	to bake	cheekily
doves	funny	to buy	sadly
sofa	spotted	to make	meanly
spaceship	curly	to read	busily
scooter	brave	to play	easily
triangle	huge	to drive	shyly
jelly	expensive	to wash	kindly
plate	horrid	to hop	unkindly
tomato	strong	to think	madly
shirt	quick	to shake	suddenly
dress	fantastic	to smile	joyfully
phone	red	to bring	skilfully
camera	green		wickedly
dinosaur	blue		calmly
knight	pink		crossly
market	striped		slowly
			quickly

What's What? Word Family Definitions



Nouns

Common nouns are things, you can put the words **a***, **the** or **some** before them
for example: **a** cake, **the** cake, **some** cakes.

*If the noun begins with a vowel, use **an** not **a**, for example: **an** elephant.



Verbs

Verbs are **doing** or **feeling** words.
You can put the word **to** in front of them,
for example: **to** munch, **to** love, **to** enjoy.



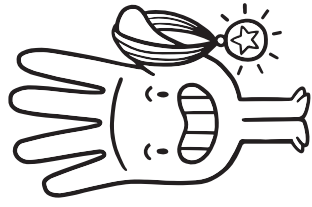
Adjectives

Adjectives add description to nouns and usually go before the noun,
for example: the **tasty** pudding.



Adverbs

Adverbs add description to verbs and usually go after the verb,
for example: to run **quickly**. They often end in **-ly**.



Scorecard

Nouns

Adjectives

Verbs

Adverbs

Player 1

Player 2

Player 3

Player 4
